

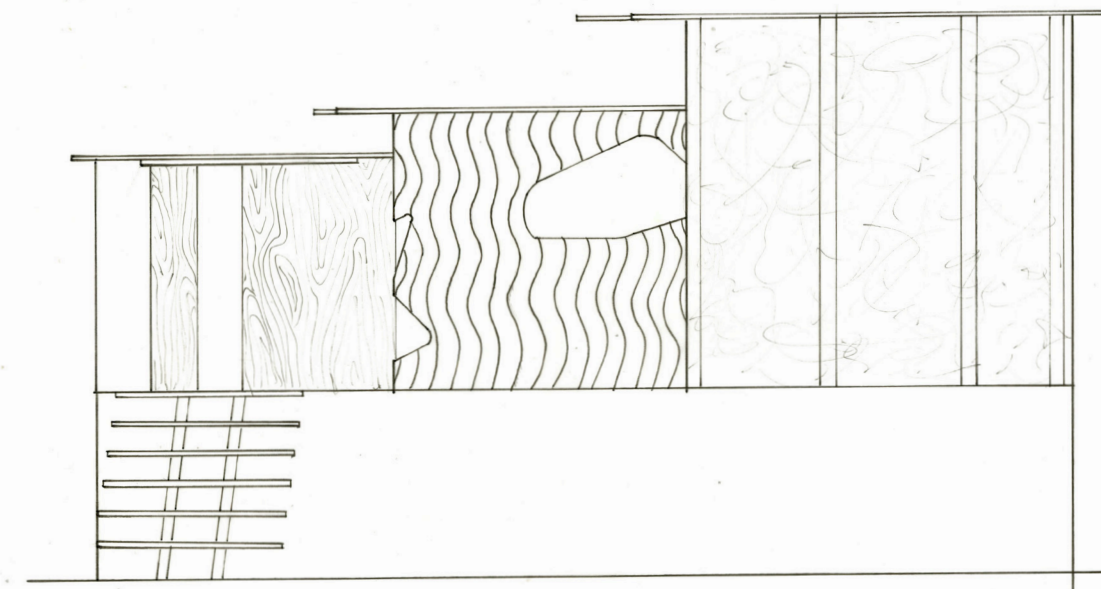
RIPPLE

THE WEEKEND BY SAZ

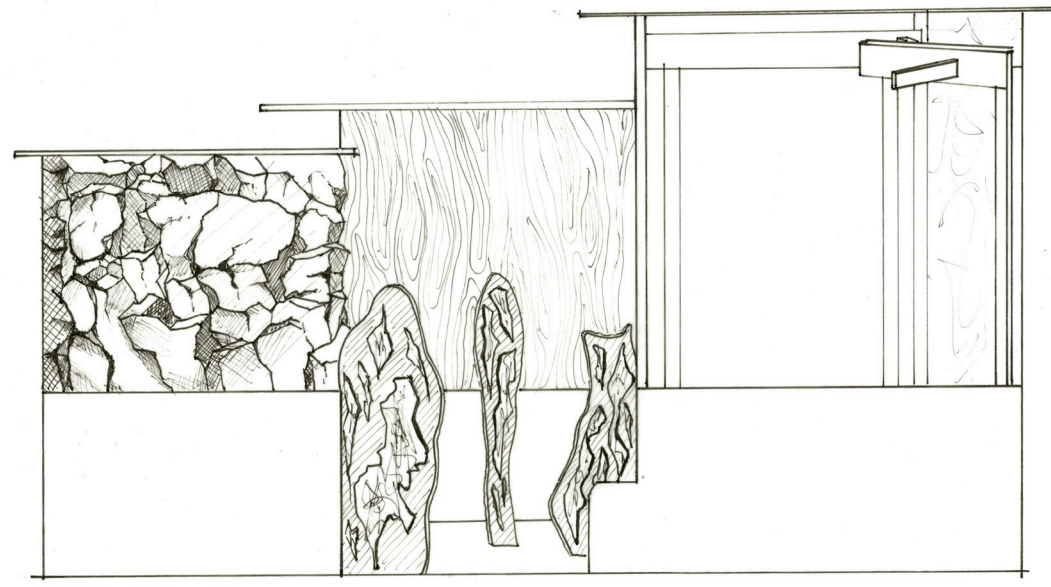
202320_INDS102_A01_SILLIMAN_CHIEN_WEI-JOU

"My man is my man, is your man. Heard it's her man too. - The Weekend by SAZ"

The Weekend by SAZ popped into my mind after I heard we needed to build a pavilion inspired by a song. The Weekend by SAZ is R&B music, with words like chill, relax, or smooth directly flashing into my mind. However, after understanding the lyrics and finding out the song is about three women having the same man. Since the song is about women fighting for men, it led me to the thought of crying, which eventually evolved to ripple, water, and river. The line between those ripples indicates a river. Three emotions associated with the music allowed the user to experience how the signer felt while signing it. Melancholy is the first experience, then move on to in-denial and healing at last.



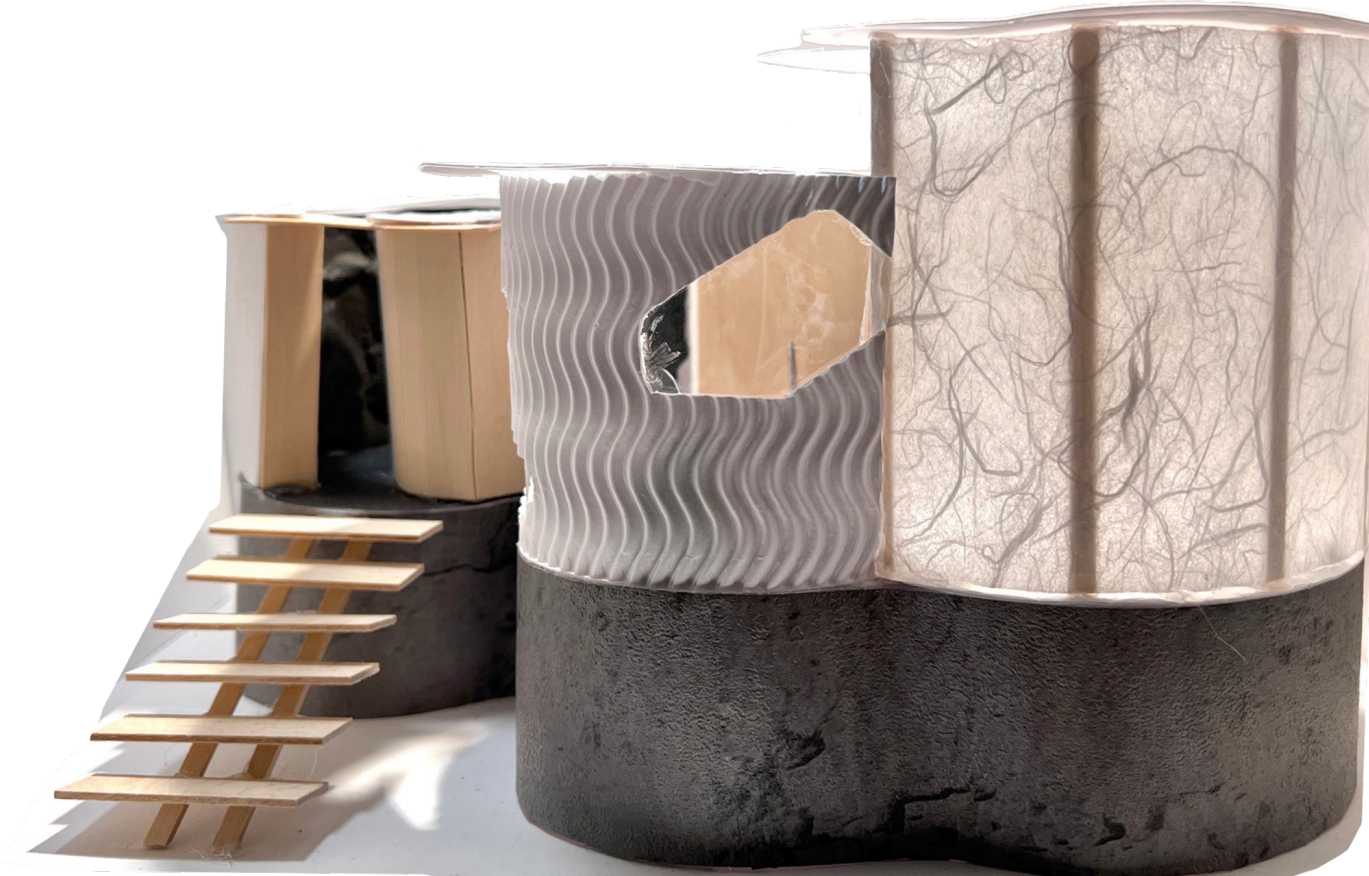
EXTERIOR ELEVATION



INTERIOR ELEVATION



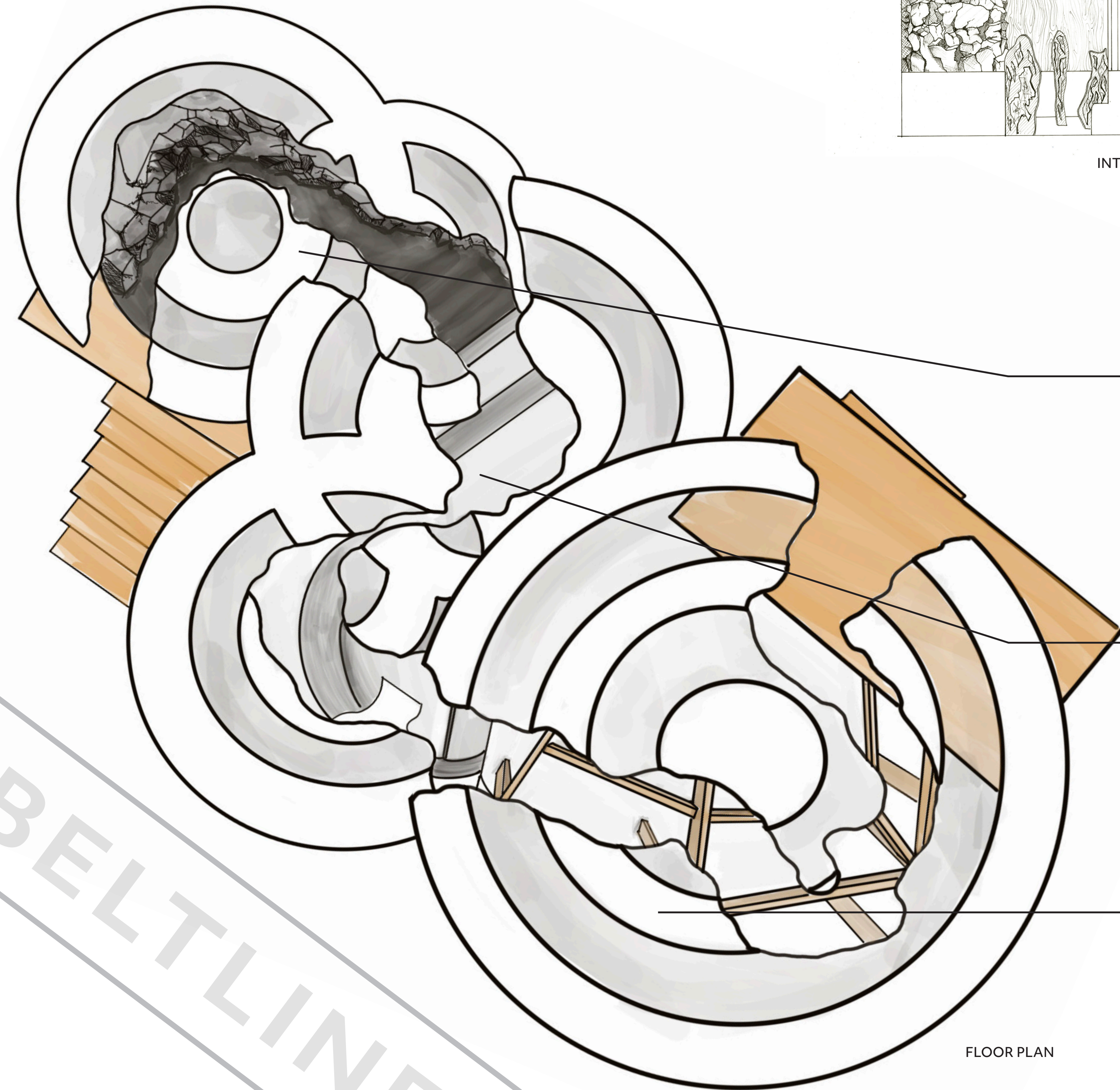
TOP VIEW



SIDE VIEW



TOP VIEW



FLOOR PLAN



FIRST EXPERIENCE MELANCHOLY

Melancholy equals heavy, dark, powerless, oppressed, and lack of room. Stone is used to covering the whole wall, giving us a sense of heaviness and darkness. Depressing the roof creates the feeling of being oppressed, lacking room, and powerless.



SECOND EXPERIENCE IN-DENIAL

In-denial is disapproval and rejecting your true self. Mirrors are placed on this site to guide you toward the next experience. However, looking back, you will find these mirrors are only completed on the front and tattered at the back, alluding to your true self.



THIRD EXPERIENCE HEALING

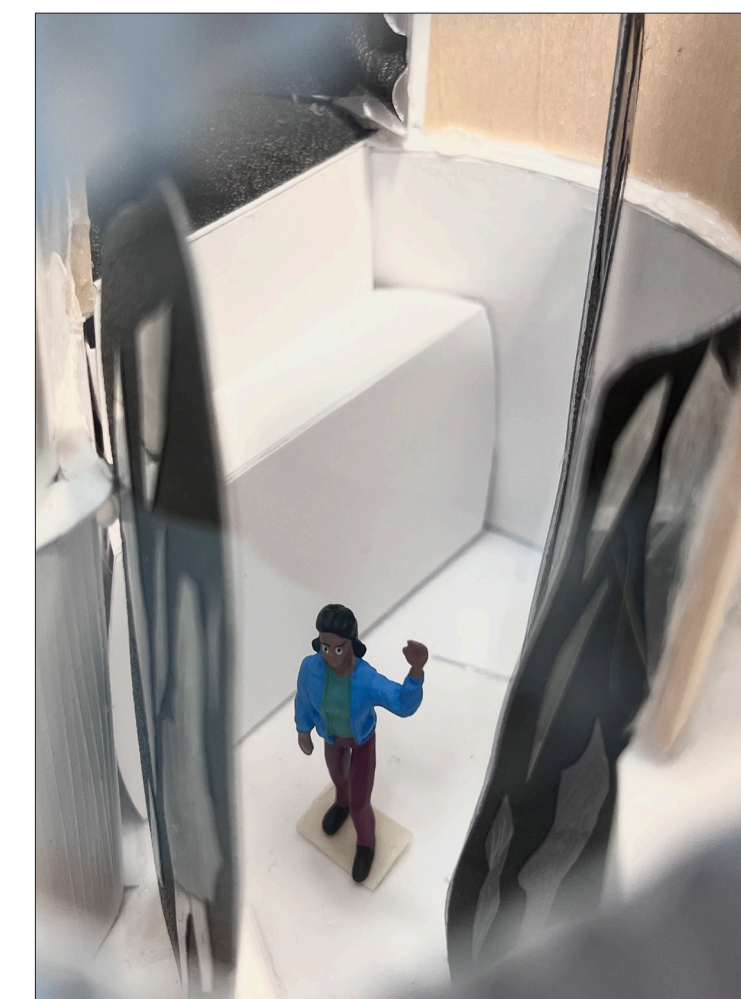
Lightweight, bright, cozy, and breathable are words related to healing. Translucent paper covers the exterior to maximize the sense of brightness but also under protection. Half-construction structure refers to the healing part of ourselves.



EXTERIOR VIEW



INTERIOR VIEW



INTERIOR VIEW



INTERIOR VIEW